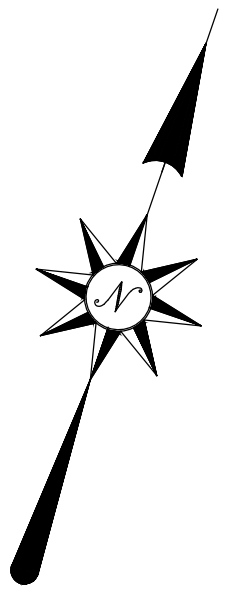
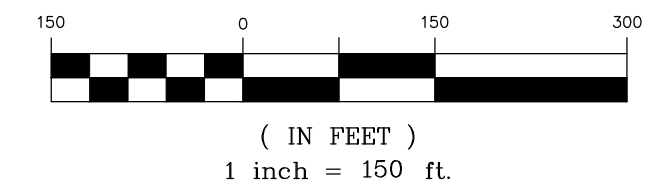


LOCATION MAP  
NOT TO SCALE

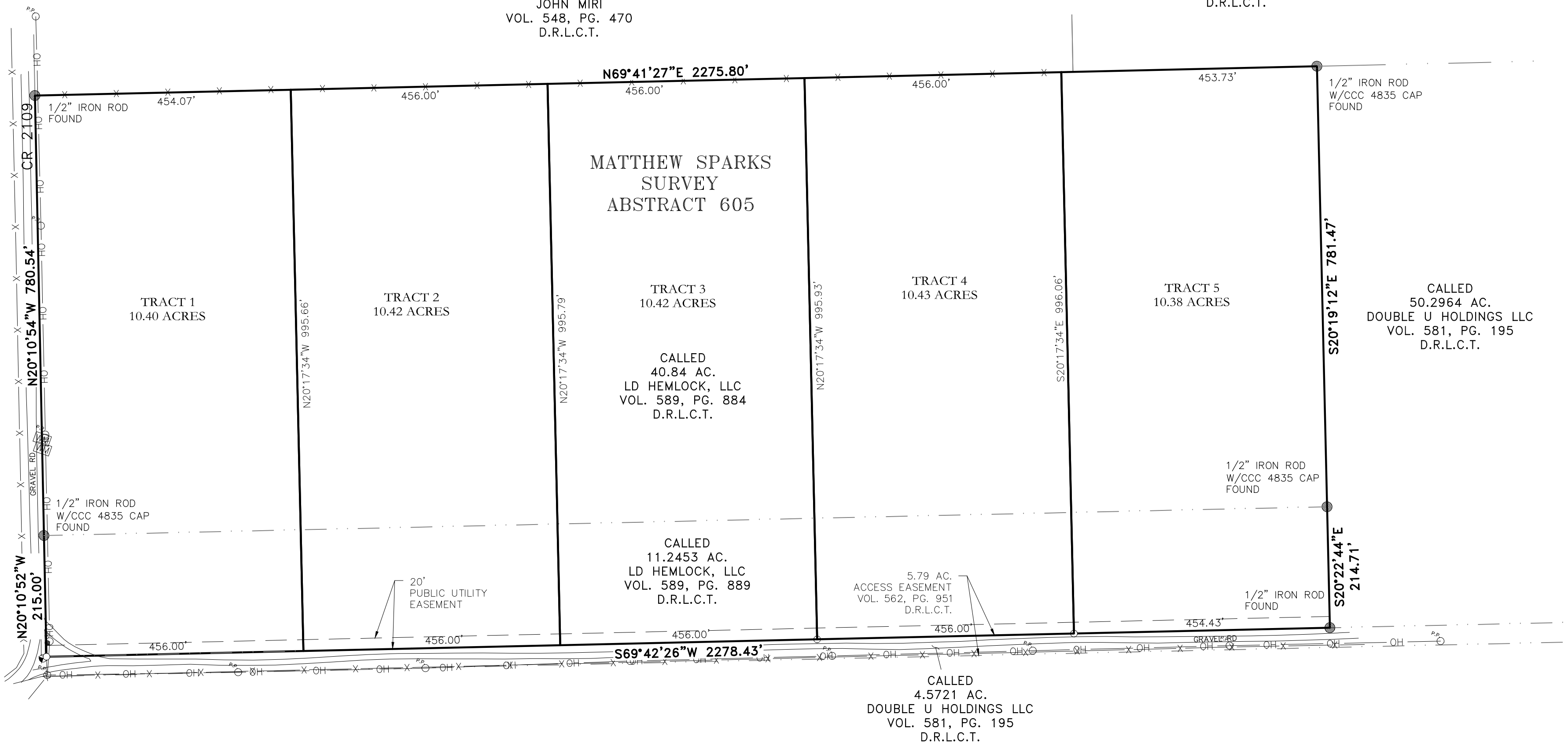
LEGEND

- PROPERTY CORNER FOUND AS NOTED
- 1/2" IRON ROD SET WITH "ATWELL" CAP
- ⊙ POWER POLE
- ⊙ SIGN
- ⊙ WATER METER
- ADJACENT PROPERTY LINE
- x FENCE LINE
- OH OVERHEAD UTILITY



CALLED  
53.00 AC.  
JOHN MIRI  
VOL. 548, PG. 470  
D.R.L.C.T.

CALLED  
50.12 AC.  
KURTIS GOSHEN  
VOL. 545, PG. 885  
D.R.L.C.T.



k:\21004704 - hemlock\dwg\survey\21004704\_tractexh.dwg Savedate:12/8/2021 3:39 PM Plotdate:12/8/2021 3:39 PM

DR.	AY	CH.	RG	DATE	DEC. 2021
P.M.	RG				
CAD FILE:	21004704 TRACTEXH.DWG				
JOB	21004704				
SHEET NO.	1 OF 1				
	REVISIONS				

**TRACT EXHIBIT**

PROJECT:

**HEMLOCK PROJECT  
LAMPASAS, COUNTY TEXAS**

**ATWELL**  
866.850.4200 [www.atwell-group.com](http://www.atwell-group.com)  
805 LAS CIMAS PARKWAY, SUITE 310  
AUSTIN, TX 78746  
512.904.0505  
TBPE LS 10193726